

"All taking down and removals to be carefully undertaken in accordance with Conservation Specifications by David Slattery Conservation Architects."

"Surviving original multi-pane sash windows to like building to be carefully conserved, retaining single panes of glass in accordance with Conservation Specifications by David Slattery Conservation Architects."

"Non-original 20th Century sash windows to Seminary to be spliced where beads and half cills are decayed. New slung-in double glazed units to be fitted into existing sashes. All in accordance with detail drawings showing glazing bar profile impact and Conservation Specifications by David Slattery Conservation Architects."

"All services to Seminary to reuse existing routes where possible with any new routes and installations to be carried out in accordance with Conservation Specifications by David Slattery Conservation Architects."

"Minor repairs to leaded and stained glass in Assembly Hall are limited to repair of opening sections and glass replacement where panes are broken. No storm or secondary glazing proposed. All to be carried out in accordance with Conservation Specifications by David Slattery Conservation Architects."

"Stained glass over front entrance to chapel is set in a timber frame and is to be carefully removed to agreed location in accordance with Conservation Specifications by David Slattery Conservation Architects."

"Slate roofs to Seminary and Chapel to be restored using Blue Bangor slate and stepped lead valleys in accordance with Conservation Specifications by David Slattery Conservation Architects."

"All cast-iron rainwater goods to be retained and renewed with any replacements where goods are beyond repair to be cast iron. All in accordance with Conservation Specifications by David Slattery Conservation Architects."

"Render to be lightly cleaned with dilute biocide in accordance with Conservation Specifications by David Slattery Conservation Architects."

"Limestone stringings and cills to be carefully cleaned using Duff or similar steam cleaning - no abrasive or chemical cleaning. All in accordance with Conservation Specifications by David Slattery Conservation Architects."

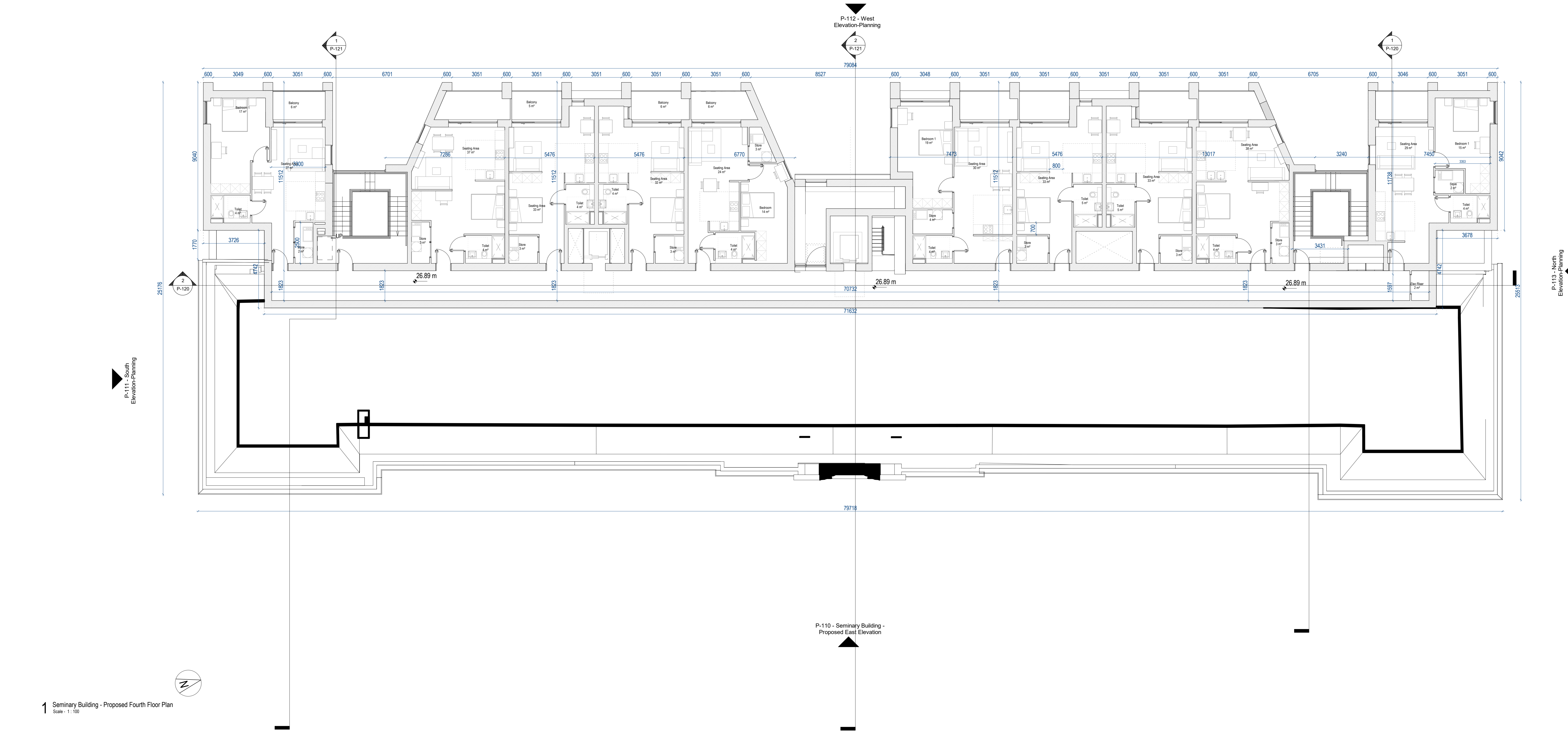
"Granite cills, cappings etc to be carefully cleaned using a light calcium carbonate abrasive in accordance with Conservation Specifications by David Slattery Conservation Architects."

"Wholesale repointing is not required and localized pointing where necessary will be carried out using a new (M43.5) mortar and aggregate and one mix to match existing bedding mortar tone and texture. All in accordance with Conservation Specifications by David Slattery Conservation Architects."

DRAWING LEGEND

EXISTING

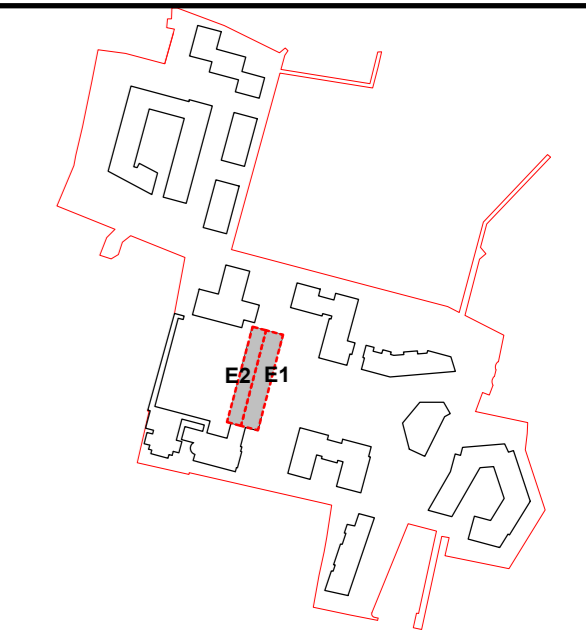
PROPOSED



1 Seminary Building - Proposed Fourth Floor Plan
Scale: 1:100

ALL DIMENSIONS TO BE CHECKED ON SITE
NO DIMENSIONS TO BE SCALED FROM THIS DRAWING
DRAWINGS TO BE READ IN CONJUNCTION WITH RELEVANT CONSULTANTS DRAWINGS

A0
N
1



REV	DATE	DESCRIPTION	DT	IB	DRN
P2	APR 21	Issued for Planning			SP
P1	NOV 20	Issued for Pre-Application Consultation			IB

ISSUED FOR PLANNING APPROVAL

APPLICANT NAME
CWTC Multi Family ICAV acting on behalf of its sub-kind DBTR DR1 Fund

PROJECT NAME
156, Cross College, BHD

LOCATION
Holy Cross College, Cariffe Road, Dublin 3 and Drumcondra Road Lower, Drumcondra, Dublin 9

DRAWING
Seminary Building - Proposed Fourth Floor

PROJECT NUMBER	DATE
CLN-MCM-00-ZZ-MS-A-0003	07/09/20

SCALE @ A0	DRAWN/CHECKED
As indicated	IB/ROC

STATUS CODE	DRAWING NUMBER	REVISION
A1	CLN-MCM-E1-ZZ-DR-A-P-104	P2

Henry J Lyons
Architecture + Interiors
henryjlyons.com

+353 1 889 3333
info@henryjlyons.com

51-54 Pearse Street
Dublin D02 X466

VIRTUS

O'Donnell+Tuomey

mcculloughmulvinarchitects

NMP
Nestlé Management + Partners

mahony pike

BM
BARRETT MANDRY

OCSC

